



This guide is for Android 5+ Smartphone users.



AbiBird®

# How to

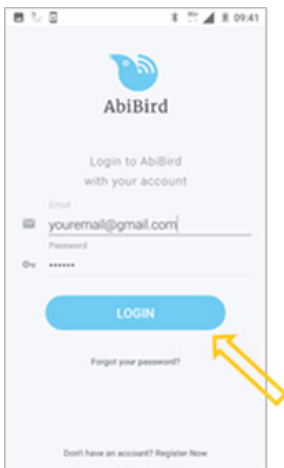
## Set or Change Notification Preferences

By setting your notification preferences you tell a sensor when to send you emails or push notifications.

To set or change notification preferences in the AbiBird app, you need to:

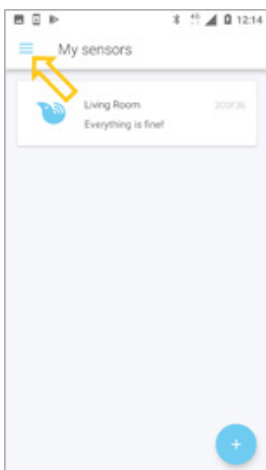
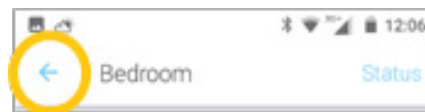
1. Access Notifications page
2. Turn notifications ON or OFF

### Step 1: Access Notifications page



Login to AbiBird with your username (email) and password.  
The *My sensors* page will open.

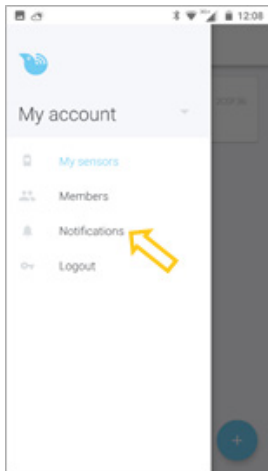
NOTE: If you are already in the AbiBird app you can access *My sensors* page by selecting the **Back Arrow** (top left) repeatedly until the *My sensors* page opens.



On the *My sensors* page, select the **Menu** icon (top left).  
The *Menu* will open.

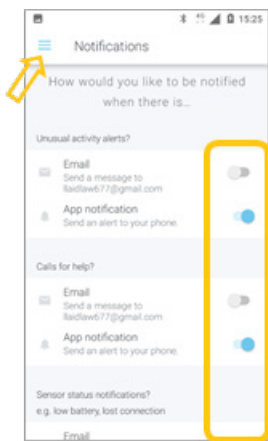


This guide is for Android 5+ Smartphone users.



From the *Menu*, select **Notifications**.  
The *Notifications* page will open.

## Step 2: Turn notifications on or off



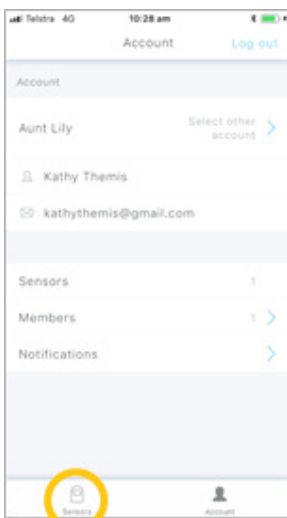
On the *Notifications* page, tap the switch next to a notification to turn it ON or OFF. (Don't 'wipe' the switch as it won't register.)  
Turn **ON** the email and phone notifications you want to receive when any of your sensors detect:

- Unusual activity – when activity in the room doesn't match the routine you set
- A 'Call for help' – when the sensor has been tapped or shaken
- A change to a sensor's status – when the battery is low or connection to the network has been lost

When you are done, select the **Menu** icon (top left) to return to the menu. Your notification preferences will be saved.

*The example shows all app notifications turned ON, and all Email notifications turned OFF.*

## That's it



Notification preferences have been set or changed.

**NOTE:** to return to the *My Sensors* page, select **My sensors** from the menu.

Working in the app, you have:

- Set how you would prefer to receive notifications from AbiBird for unusual activity, calls for help and changes to sensor/s status.



This guide is for Android 5+ Smartphone users.



AbiBird®

#### NOTE

Notification preferences apply to all sensors paired to your AbiBird account. However, you can pause notifications for a **INDIVIDUAL** sensor (see guide: *How to Pause Sensor Notifications*).

## Next Step

Your next step is to:

- Add another sensor if you have more than one sensor.

(See the guide: *How to Add Additional Sensors*)

or

- Begin using AbiBird as initial setup is now complete.

You can:

- Check the sensor's status and rename it if required  
(See guide: *How to Check Sensor Status and Rename Sensor*)
- Modify the sensor's daily routine (See guide: *How to Set Up or Modify Daily Routines*)
- Adjust the sensor's alert sensitivity (See guide: *How to Adjust Sensor Alert Sensitivity*)
- Pause the sensor's notifications (See guide: *How to Pause Sensor Notifications*)

## Related Guides

*How to Add Additional Sensors*

*How to Pair AbiBird Sensor with App and Account*

*How to Name Sensor Location and Place in Position*

*How to Check Sensor Status and Rename Sensor*

*How to Adjust Sensor Alert Sensitivity*

*How to Pause Sensor Notifications*